

# EMSI



1187 Alturas Drive  
Moscow, Idaho 83843  
2088823567

## Program Report



Economic Modeling Specialists, Inc. [www.economicmodeling.com](http://www.economicmodeling.com)

# EMSI

## Region Info

Region: San Francisco larger MSA

County Areas: Alameda, California (6001), Contra Costa, California (6013), Marin, California (6041), San Francisco, California (6075), San Mateo, California (6081), Santa Clara, California (6085)

## Executive Summary

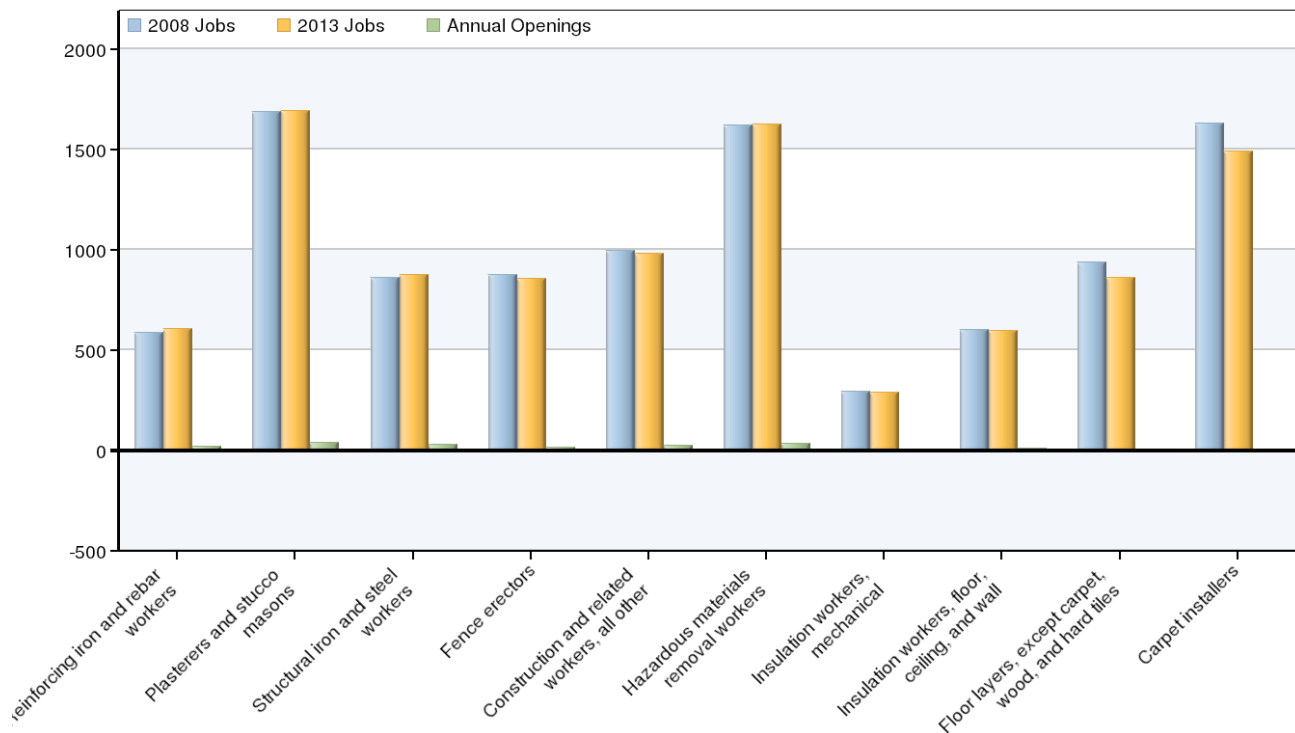
Program
Construction Crafts Technology (TOP 0952.00)

Program Occupations
First-line supervisors/managers of construction trades and extraction workers (SOC 47-1011)
Carpet installers (SOC 47-2041)
Floor layers, except carpet, wood, and hard tiles (SOC 47-2042)
Floor sanders and finishers (SOC 47-2043)
Construction laborers (SOC 47-2061)
Tapers (SOC 47-2082)
Insulation workers, floor, ceiling, and wall (SOC 47-2131)
Insulation workers, mechanical (SOC 47-2132)
Plasterers and stucco masons (SOC 47-2161)
Reinforcing iron and rebar workers (SOC 47-2171)
Structural iron and steel workers (SOC 47-2221)
Fence erectors (SOC 47-4031)
Hazardous materials removal workers (SOC 47-4041)
Construction and related workers, all other (SOC 47-4099)

Summary	
2008 Occupational Jobs	62,597
2013 Occupational Jobs	62,621
Total Change	25
Total % Change	0%
2009 Median Hourly Earnings/Worker	\$25.98
Annual Openings	720
Total Replacement Jobs	3,576

Source: EMSI Complete Employment - Spring 2009

## Occupational Breakdown

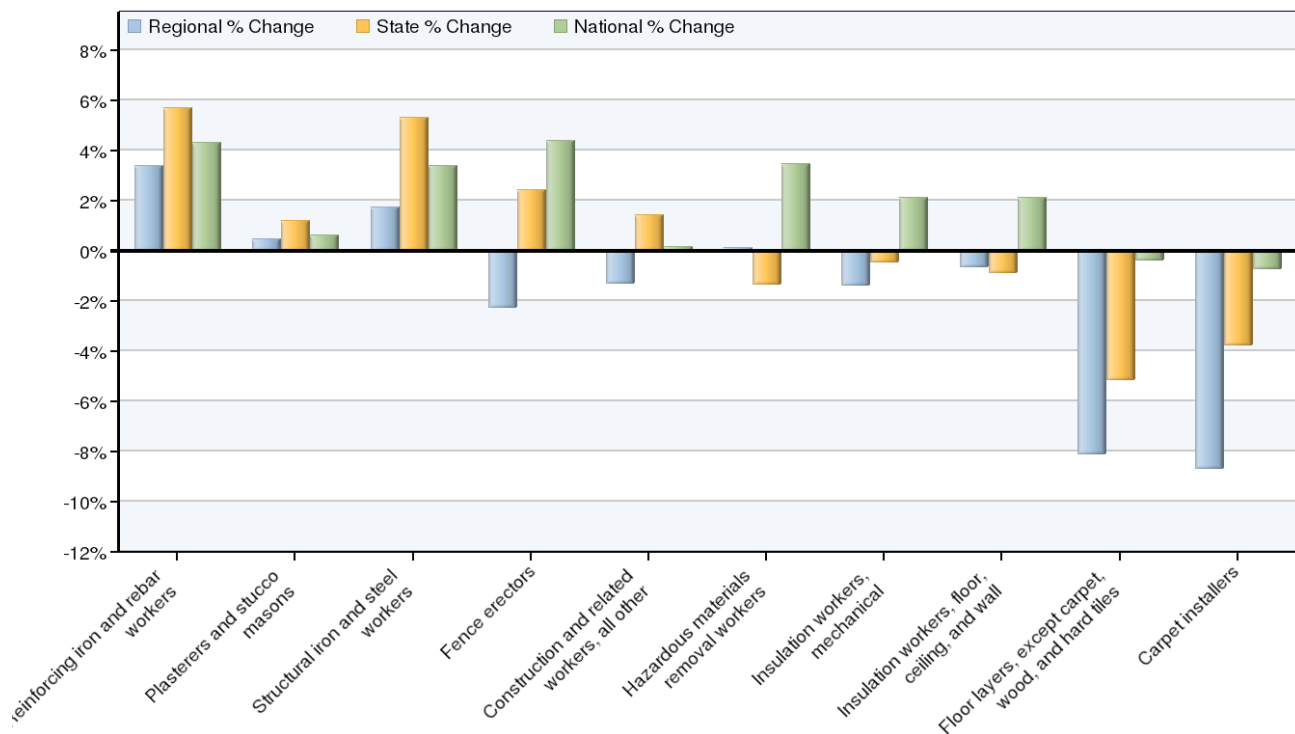


SOC Code	Description	2008 Jobs	2013 Jobs	Annual Openings	Replacement Jobs	Hourly Earnings	Education Level
47-2171	Reinforcing iron and rebar workers	588	608	18	71	\$29.48	Long-term on-the-job training
47-2161	Plasterers and stucco masons	1,685	1,693	38	182	\$20.84	Long-term on-the-job training
47-2221	Structural iron and steel workers	862	877	30	137	\$31.25	Long-term on-the-job training
47-4031	Fence erectors	876	856	12	81	\$18.16	Moderate-term on-the-job training
47-4099	Construction and related workers, all other	995	982	22	122	\$21.24	Moderate-term on-the-job training
47-4041	Hazardous materials removal workers	1,621	1,623	34	169	\$17.55	Moderate-term on-the-job training
47-2132	Insulation workers, mechanical	292	288	5	31	\$23.03	Moderate-term on-the-job training
47-2131	Insulation workers, floor, ceiling, and wall	601	597	12	63	\$23.69	Moderate-term on-the-job training
47-2042	Floor layers, except carpet, wood, and hard tiles	937	861	7	109	\$24.74	Moderate-term on-the-job training
47-2041	Carpet installers	1,632	1,490	-6	110	\$23.62	Moderate-term on-the-job training
47-2043	Floor sanders and finishers	670	636	3	50	\$24.24	Moderate-term on-the-job training

47-2061	Construction laborers	31,437	31,632	262	1,116	\$21.82	Moderate-term on-the-job training
47-2082	Tapers	2,349	2,310	22	150	\$29.05	Moderate-term on-the-job training
47-1011	First-line supervisors/managers of construction trades and extraction workers	18,052	18,169	261	1,186	\$34.80	Work experience in a related field
	Total	62,597	62,621	720	3,576	\$25.98	

Source: EMSI Complete Employment - Spring 2009

## Occupational Change



SOC Code	Description	Regional Change	Regional % Change	State % Change	National % Change
47-2171	Reinforcing iron and rebar workers	20	3%	6%	4%
47-2161	Plasterers and stucco masons	8	0%	1%	1%
47-2221	Structural iron and steel workers	15	2%	5%	3%
47-4031	Fence erectors	-20	-2%	2%	4%
47-4099	Construction and related workers, all other	-13	-1%	1%	0%
47-4041	Hazardous materials removal workers	2	0%	-1%	3%
47-2132	Insulation workers, mechanical	-4	-1%	-0%	2%
47-2131	Insulation workers, floor, ceiling, and wall	-4	-1%	-1%	2%
47-2042	Floor layers, except carpet, wood, and hard tiles	-76	-8%	-5%	-0%
47-2041	Carpet installers	-142	-9%	-4%	-1%
47-2043	Floor sanders and finishers	-34	-5%	-2%	3%
47-2061	Construction laborers	195	1%	4%	4%
47-2082	Tapers	-39	-2%	-1%	2%
47-1011	First-line supervisors/managers of construction trades and extraction workers	117	1%	3%	5%

Source: EMSI Complete Employment - Spring 2009

## Occupation Distribution



County	2008 Jobs
Alameda, CA (6001)	16,364
Santa Clara, CA (6085)	15,232
Contra Costa, CA (6013)	11,367
San Francisco, CA (6075)	8,732
San Mateo, CA (6081)	7,427
Marin, CA (6041)	3,475

Source: EMSI Complete Employment - Spring 2009

## Data Sources and Calculations

### Occupation Data

Organizing regional employment information by occupation provides a workforce-oriented view of the regional economy. EMSI's occupation data are based on EMSI's industry data and regional staffing patterns taken from the Occupational Employment Statistics program (U.S. Bureau of Labor Statistics). Wage information is partially derived from the American Community Survey. The occupation-to-program (SOC-to-CIP) crosswalk is based on one from the U.S. Department of Education, with customizations by EMSI.

### State Data Sources

This report uses state data from the following agencies: California Labor Market Information Department.